



CURTIS CAB SYSTEM FOR JOHN DEERE 2 SERIES



Perfect for any condition!



John Deere 2 Family (2017~)
Curtis Advantage Cab
(PN: 1JD2FCAG)
shown with optional
strobe & work lights

*HEATER and Windshield
Wiper Included*

Cab Fits John Deere 2032R and 2038R Models

CURTIS Advantage SERIES

CURTIS CAB FEATURES

Affordable all-steel cab
with corrosion-resistant
powder-coat finish

Windshield Wiper & Cab
Heater Included

Venting Glass Windshield
& Rear Window

Rear Glass Panel is
Pin Hinged to Lift Out
in Seconds

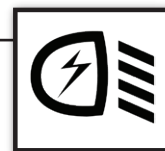
Doors are Pin Hinged &
Lift Out in Seconds

Large Glass Windows and
Rear Panel

CURTIS QUALITY ACCESSORIES

LED WORK LIGHTS AND STROBES

Illuminate your Work Area and Increase Safety
with Work Lights and Strobes from Curtis.
Magnetic Base Strobe Light Recommended.



SIDE VIEW MIRROR KIT

Two Mirrors per Kit. Includes all Mounting
Hardware. Durable and Stylish.



REAR WIPER KIT

Optional Rear Wiper Kit. Includes Wiring
Harness and Everything Needed to Install.



*WE RECOMMEND AN OPTIONAL SEAL KIT FOR IMPROVED DRAFT & DUST PROTECTION

70 Hartwell Street | West Boylston, MA | 01583 | 508.853.2200 | www.curtiscab.com



CURTIS CAB SYSTEM FOR JOHN DEERE 2 SERIES

INCLUDED

20,000 BTU
MEGA BURNER



CAB HEATER

110° Wiper is Included

Pre-drilled holes for
optional side mirror

Locking Doors

John Deere green
color match

Steel Roof with Acoustical Headliner

Pin Hinged Doors & Rear Panel
- Toolless Removal

Backhoe Compatible

Cab Height is 58.25"
from Floorboard

Weight: 328 lbs.

Optional Rear Wiper Available

Cab Fits John Deere 2032R & 2038R

John Deere 2032R
Curtis Advantage Cab
shown with optional work lights

Enhancing our Customers' Comfort and Productivity Every Day

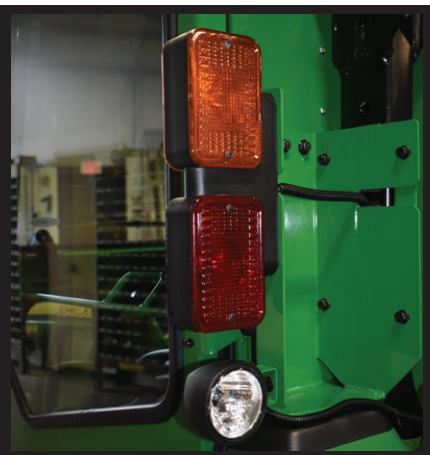


More Innovation. More Value.

RUGGED ALL STEEL CONSTRUCTION



Fender Lights
Easily
Relocated for
Use in the
Front or Rear



AUTHORIZED DEALER

(PN: 1JD2FCAG) (2017~)

JOHN DEERE IS A REGISTERED TRADEMARK OF JOHN DEERE CORPORATION. CURTIS INDUSTRIES, LLC AND ITS PRODUCTS ARE NOT ENDORSED BY OR AFFILIATED WITH JOHN DEERE CORPORATION. JDCISS 12 (2/20)

70 Hartwell Street | West Boylston, MA | 01583 | 508.853.2200 | www.curtiscab.com