



CURTIS HYDRAULIC UTILITY VEHICLE PLOW



Hydraulic UTV Plow
(PN: 1UTVP)
Shown with Optional Blade Markers

Custom Mounts for: John Deere Gator XUV 835, 845, 865 & 875

John Deere Gator XUV 615, 625, 815, 825, 855: 2011+

Polaris Ranger XP900: 2013+ | Gravely Atlas JSV 3200, 3400, 3400SD & 6400
Club Car XRT1550, Carryall 1500 & 1700 | Kawasaki Mule Pro FX/DX, FXT/DXT

CURTIS PREMIUM FEATURES

Full hydraulic lift and angle control

Fully enclosed, sealed hydraulic system

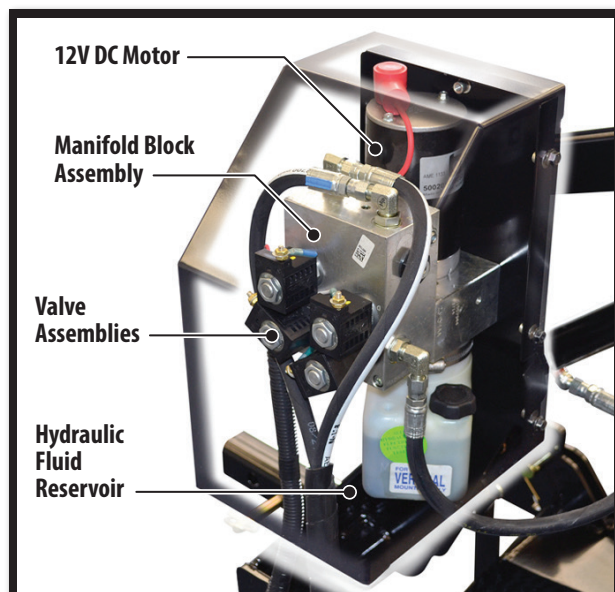
72 inch wide moldboard with 48 inch push frame

Full trip, durable 12-gauge steel moldboard with adjustable trip springs

Illuminated 4-button hand-held controller

Reversible cutting edge and adjustable skid shoes included

FULLY ENCLOSED HYDRAULICS



REMOVE 4 COVER BOLTS FOR EASY ACCESS

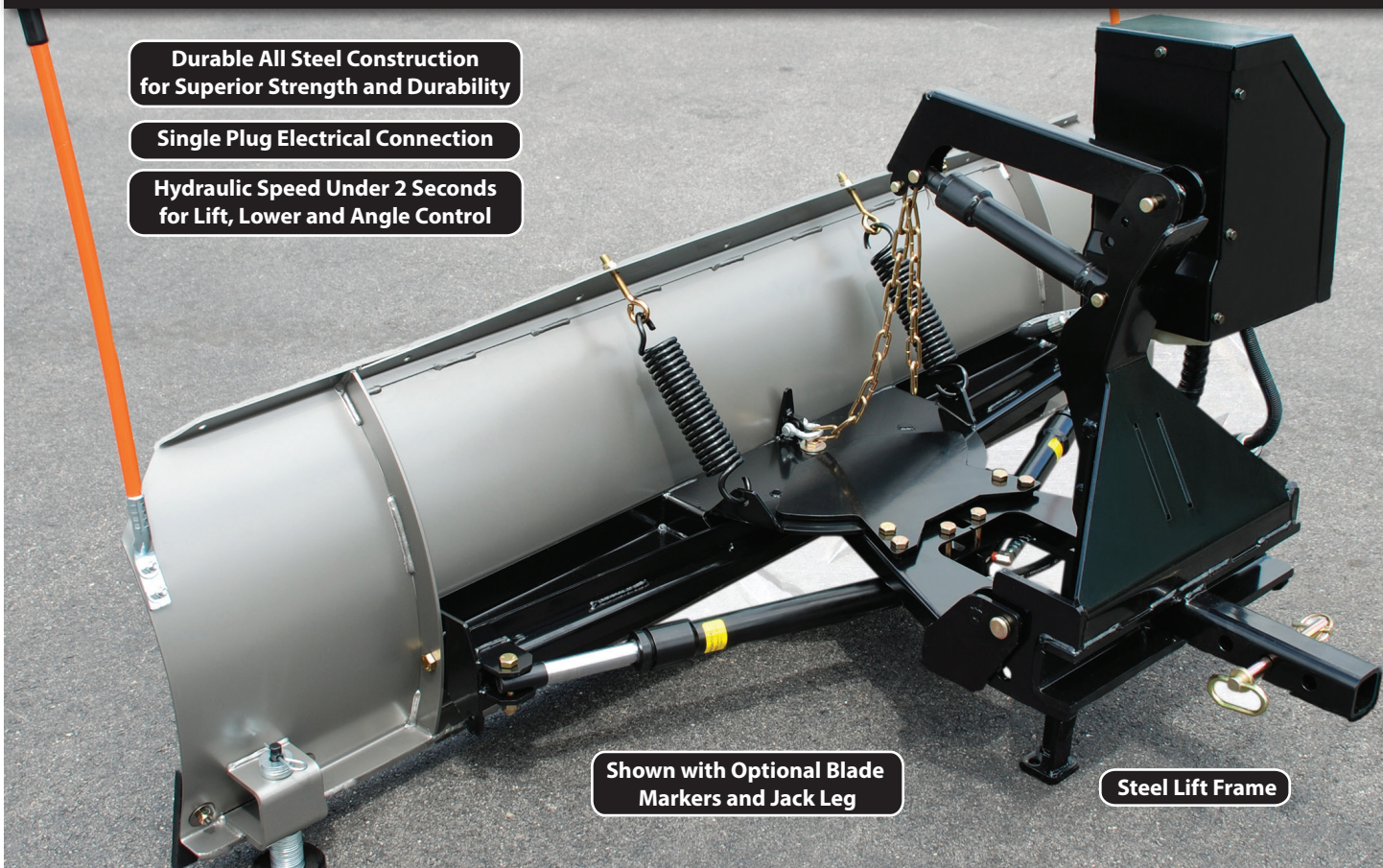


CURTIS HYDRAULIC UTILITY VEHICLE PLOW

**Durable All Steel Construction
for Superior Strength and Durability**

Single Plug Electrical Connection

**Hydraulic Speed Under 2 Seconds
for Lift, Lower and Angle Control**



**Shown with Optional Blade
Markers and Jack Leg**

Steel Lift Frame

Enhancing our Customers' Comfort and Productivity Every Day  More Innovation. More Value.

FAST-CAST 300 SPREADER

- 3.0 Cubic Feet/180 Lb. Capacity
- 4-20 Ft. Spreading Width
- Modular Steel Frame
- 10" Steel Spinner
- 12 Volt DC/7-10 Amp Direct Drive Motor
- For Rock Salt
- High-Density UV Protected Polymer



FAST-CAST 400 SPREADER

- 3.0 Cubic Feet/180 Lb. Capacity
- 4-20 Ft. Spreading Width
- Modular Steel Frame
- 10" Steel Spinner
- 12 Volt DC/7-10 Amp Direct Drive Motor
- For Light Rock Salt, Fertilizers and Fine Material Grade Applications
- High-Density UV Protected Polymer

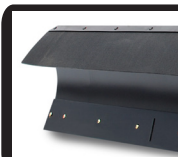


FAST-CAST 2000 SPREADER

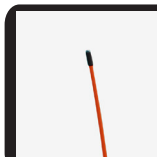
- 5.0 Cubic Feet/350 Lb. Capacity
- 4-40 Ft. Spreading Width
- Modular Steel Frame
- 10" Steel Spinner
- 12-15 Amp Draw
- For Rock Salt
- High-Density UV Protected Polymer



**Winch Lift Utility
Vehicle Plow is
also Available**



**Optional Top
Deflector
Available**



**Optional High
Visibility Blade
Markers Available**

All brand names are trademarked by their respective companies. Curtis Industries and its products are not endorsed or affiliated with any of these companies.

70 Hartwell Street | West Boylston, MA | 01583 | 508.853.2200 | www.CurtisCab.com