



KAWASAKI TERYX ClearView Cab p/n: 1KAWT8002CV fits model years: 2013-2017

The contents of this envelope are the property of the owner.
Be sure to leave with the owner when installation is complete.

Warning! This vehicle is capable of traveling at high speed. Do not attempt to drive the vehicle with the cab doors removed. If the cab doors are intentionally removed, the O.E.M. (Original Equipment Manufacturer) vehicle half doors or netting must be re-installed prior to driving the vehicle. Failure to do so could result in serious injury or death.

Caution! Do not operate vehicle with windshield in the full open position.

Approximate Installation Time *

Experienced Dealer Technician – 3.5 Hours

Average Dealer Technician – 4.5 Hours

Do-It-Yourself – 5.5 Hours

(* = Not including accessories)



A windshield wiper is not included with this cab kit. It is available as a separate additional option (p/n: 1KAWT800CVWPR).

Door mirrors are not included, but are available as a separate additional option (p/n: 9PM6).

revised: 12-06-2018



NOTICE

Curtis Cabs, blades and general accessories add additional weight to the base vehicle. All Curtis accessory weights are listed in product brochures. Deduct the accessory's total weight from the vehicle's rated capacity and never exceed the vehicle's rated capacity including driver and passenger.



WARNING *Exposure to Carbon Monoxide can Cause illness, serious injury or death. Never operate vehicle if suspicious of Carbon Monoxide. Inspect exhaust system for leaks monthly. Leaks can result from loose connections, corrosion, cracks or other damage to the exhaust manifold. If leaks are found, repair or replace exhaust system. Do not use vehicle until repair or replacement is complete.*



WARNING

Serious Injury or Death



This cab enclosure does not provide protection from rollover or other accidents.



This cab enclosure does not provide protection from flying objects including golf balls.



This cab enclosure does not provide protection from lightning. When lightning threatens take cover and do not operate vehicle.

California Proposition 65



WARNING



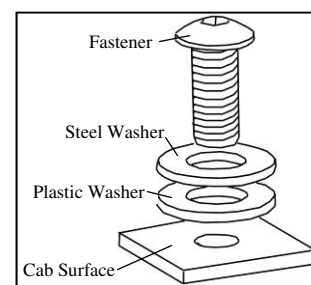
Engine exhaust, some of its constituents, certain vehicle components and fluids, contain or emit chemicals known to the State of California to cause cancer and birth defects or other reproductive harm.

CAB INSTALLATION

BEFORE YOU START

HELPFUL HINTS:

- Refer to parts diagram toward the back of this manual to help identify parts during the assembly process.
- To assist with the cab installation, leave all bolts loose for later adjustment unless otherwise specified. Install nut covers as a very last step after finishing the installation.
- Read and understand all instructions before beginning.
- Plastic washers have been supplied to provide a weather seal under the heads of all exterior bolts. The plastic washer should be installed under each bolt head directly against the outside cab surface. Care should be taken not to over tighten the fasteners and damage the plastic washer. Also use steel washers as required. See diagram. Tip: the black plastic washers can be difficult to distinguish from the black steel washers. Use a magnet or look for round witness marks left on the plastic washers from the mold ejector pins.
- Apply a clear silicone sealant to seal any minor gaps that may occur due to vehicle variations.
- Use caution to avoid damaging any factory installed threaded inserts or weldnuts. Begin the bolt engagement by hand to guard against potential cross threading.



SAFETY INSTRUCTIONS

Warning: Failure to heed all safety and operating instructions, and warnings regarding the use of this product, can result in serious bodily injury.

Install all parts indicated in assembly instructions. Failure to fully assemble the product before use could result in personal injury.

Assembly of product requires use of hand. If you are not experienced in using these types of tools, have a product dealer do the installation for you.

Some parts contain sharp edges, wear protective gloves if necessary.

Always keep your assembly area clean, uncluttered, and well lit.

Keep visitors and children a safe distance away from the assembly area. Visitors should wear the same safety equipment described below.

Do not operate your UTV with the cab doors open. Failure to properly latch the doors before moving the vehicle could result in serious injury.

In extreme cases, severe bumps may cause the windshield to close even from the vented position. It is recommended to keep the windshield fully closed when driving over extreme bumps, etc.

Plastic washers have been supplied to provide a weather seal around all exterior fasteners. The plastic washer should be installed under each bolt head directly against the outside cab surface. Care should be taken not to over tighten the fasteners and damaging the plastic washer. Use metal washers as required.

MAINTENANCE AND CLEANING

The inside surface of the windshield is coated with a plasticized safety film. Use care when cleaning the windshield to avoid scratching the inside surface.

To clean polycarbonate surfaces, use a soapy water solution or other gentle means.

Dirt and dust can be removed with a gentle water stream and wiping only with a wet or damp soft cloth from top to bottom.

Do not use detergents that could scratch the surfaces. (abrasives, harsh fabrics, etc.)

Do not use solvents or alkaline detergents or cleaners with ammonia (ammonium hydroxide).

Do not remove impurities from surfaces with a razor blade or other sharp items.

Do not clean the cab when the polycarbonate surfaces are heated by the sun.

Do not use a squeegee, it could scratch surfaces.

The mfr. is not responsible for surface scratches caused by failure to comply with the above instructions.

Check and tighten hardware after 40 hours of operation. Periodically inspect and tighten hardware for the remainder of the unit's life.

1. VEHICLE PREP

1.1 Remove all additional systems from the R.O.P.S. (Roll-Over Protective Structure) including work lights, rear mirrors, drink holders etc.. Remove the OEM half doors or nets from the vehicle and remove the seats from the vehicle.

2. REAR PANEL

2.1 Remove the original screws on both sides from the UTV roll cage (shown in the white circle in the photo)

2.2 Align the right door base onto the UTV roll cage

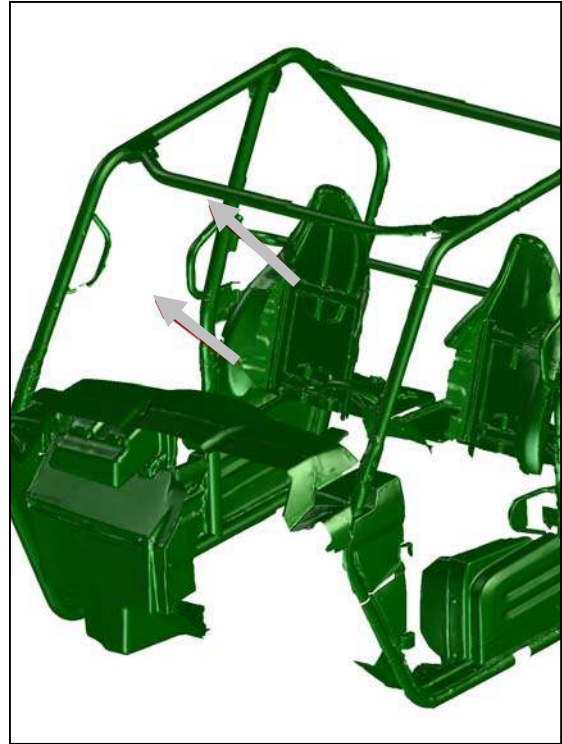


Fig. 1.1

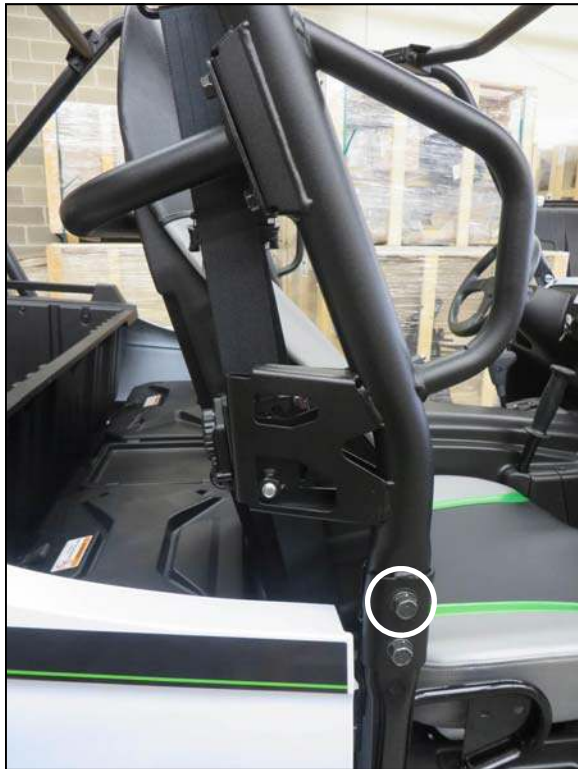


Fig. 2.1



Fig. 2.2

2. REAR PANEL (cont'd)

2.3 Fasten the right door base to the UTV roll cage with one M12x60 screw, washers, and nut.

2.4 Fasten the right door base to the UTV roll cage with the included brackets using 5x M8x20 screws, washers, and nuts.

2.5 Repeat previous steps with the left door base

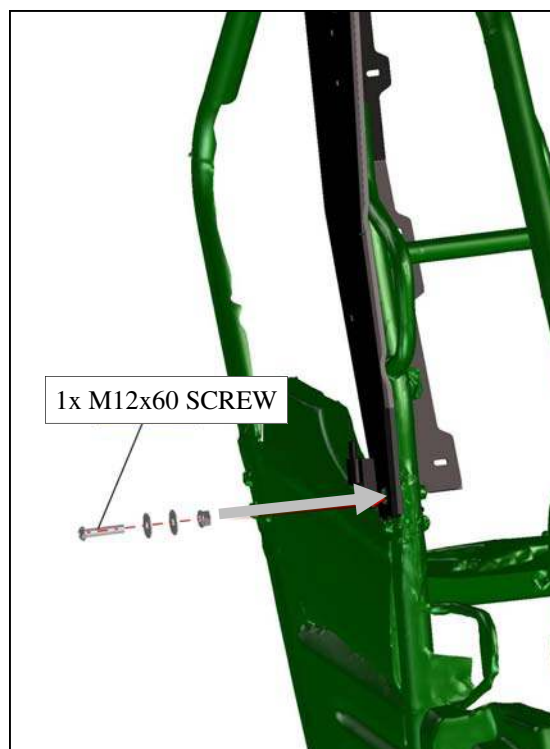


Fig. 2.3



Fig. 2.4



Fig. 2.5

2. REAR PANEL (cont'd)

2.6 Align the rear polycarbonate onto the door bases

2.7 Fasten the rear polycarbonate to the door bases with two M8x30 screws, washers, and nuts.

2.8 Align the rear bracket onto the door base and fasten it to the rear door base and rear polycarbonate with 2x M8x35 screws, washers, and nuts.

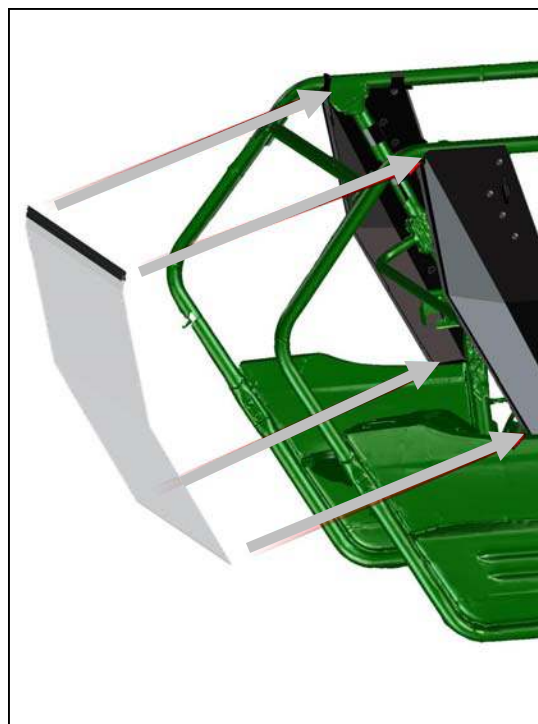


Fig. 2.6



Fig. 2.7

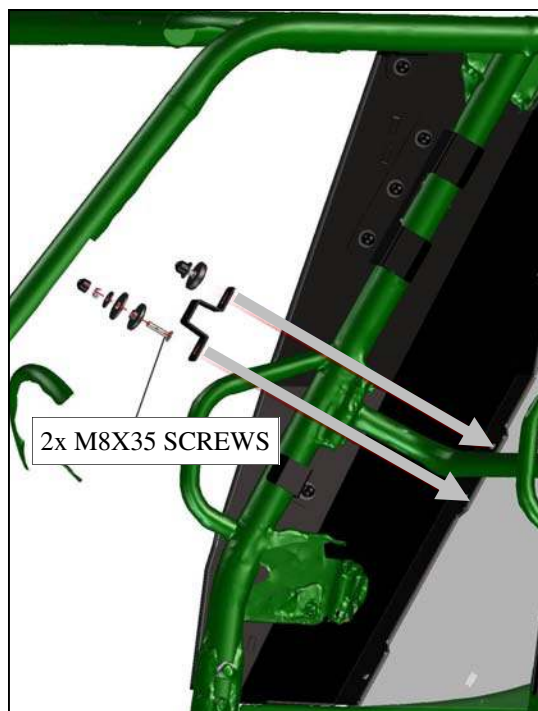


Fig. 2.8

2. REAR PANEL (cont'd)

2.9 From the inside, place the rear bottom ledge onto the door bases.

2.10 Fasten the rear bottom ledge to the door base and the rear polycarbonate with 2x M8x40 screws, washers, and nuts.

3. FRONT PANEL

3.1 One screw at a time, remove the O.E.M. screws from the roll cage (shown in the white circle in the photo) and replace them with the newly supplied M12 screws on both sides.

3.2 The new screws must be inserted from the inner side of the roll cage on both sides



Fig. 2.9

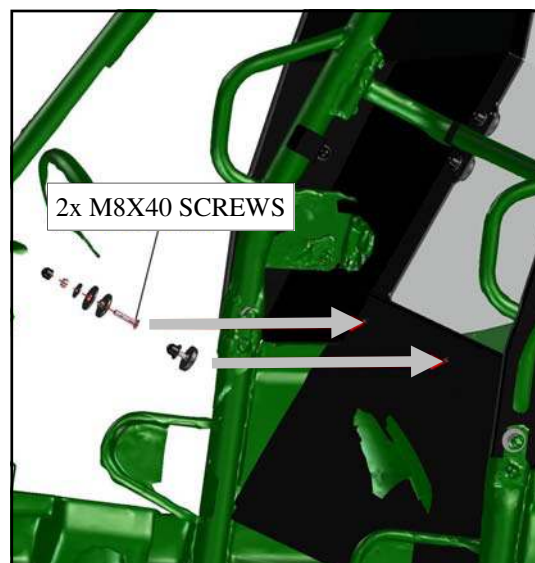


Fig. 2.10



Fig. 3.1



Fig. 3.2

3. FRONT PANEL (cont'd)

3.3 Place the front bottom ledge onto the UTV roll cage.

Note: the EPDM rubber has a perforation to suite various model years. The full configuration (leaving the rubber as it is) fits older models such as 2014-2016. The 2017 model (and newer vehicles) require the perforation to be separated and discarded. Dry fit the entire front lower ledge assembly onto the hood of the vehicle as a double check before separating at the perforation. If rubber must be removed, it is suggested to follow it up with a nicer finish cut by using scissors to clean up the remaining jagged rubber edge.

3.4 One by one, replace screws from previous step. From outer side, add washers and nuts and secure the front bottom ledge to the roll cage on each side.

3.5 Install the door stop bracket screws into the front bottom ledge bracket. Place the front bottom ledge bracket onto the front bottom ledge and secure with screws, washers, and nuts on both sides. Note: the two bolts marked "A" in the photo must be loaded in holes opposite of illustration. There is an intentional recess to accept the heads of the bolts. Heads of carriage bolts go up against ROPS tubing.

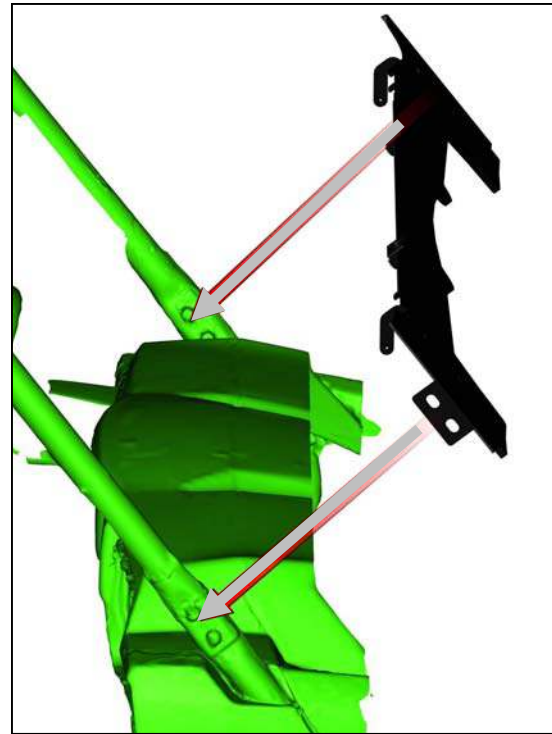


Fig. 3.3

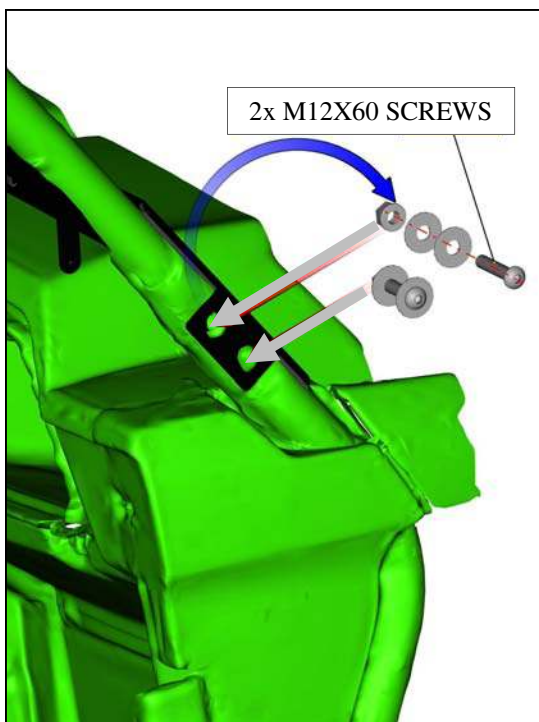


Fig. 3.4

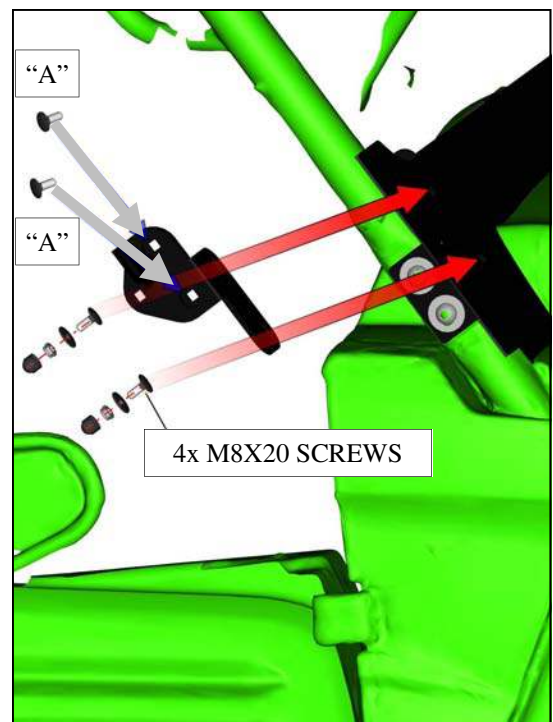


Fig. 3.5

3. FRONT PANEL (cont'd)

Caution! The inside surface of the front panel is coated with a plasticized safety film. Use care when cleaning the front panel to avoid scratching the inside surface.

3.6 Align the front glass assembly onto the upper ledge with the plastic hinges and spacer blocks and fasten with 4x M8x40 screws

3.7 Place the front panel assembly onto the UTV roll cage. Per the photo on the right, keep the flat head screws loose/snug. When it's time to tighten these screws, use care to avoid cracking the countersink. **Caution: the front panel hinges are plastic components. Do not over tighten the flat head screws. Torque to 7 ft.-lbs. max.**

3.8 Fasten the front upper ledge to the UTV roll cage with one M8x35 screw, washer, and nut and two M8x20 screws, washers, and nuts.

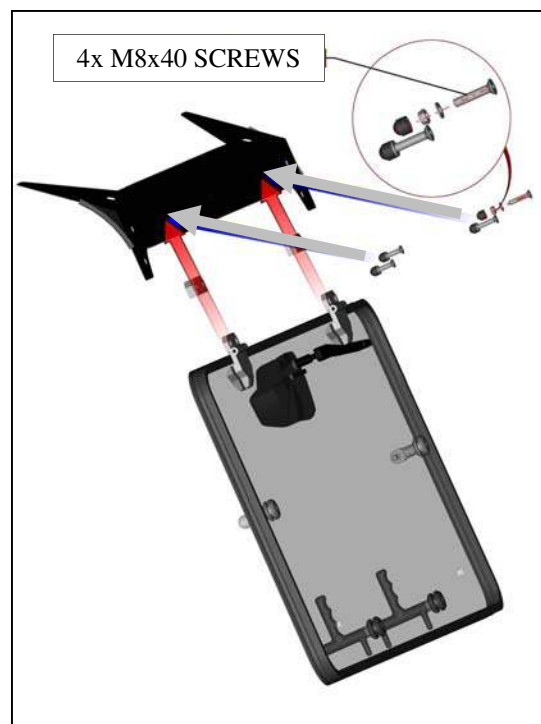


Fig. 3.6

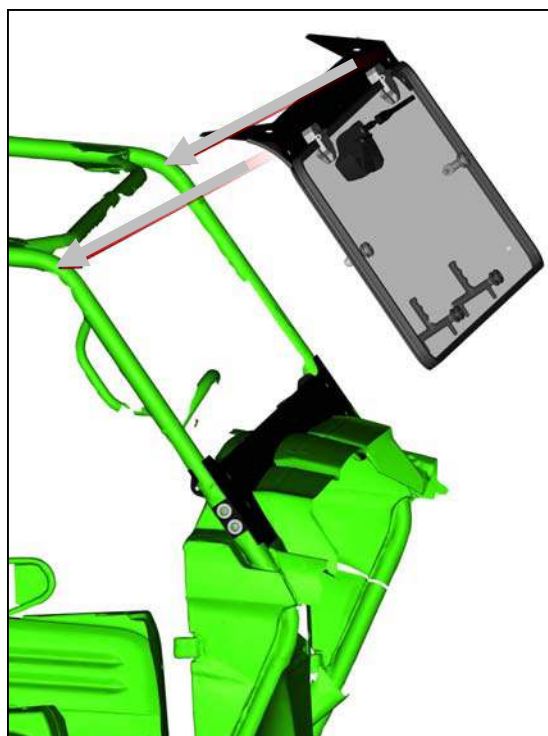


Fig. 3.7



Fig. 3.8

3. FRONT PANEL (cont'd)

3.9 Install the gas spring into the brackets oriented with the piston rod pointing down for best, continuous seal, lubrication, and longest piston gas spring life. Install the front gas spring onto the gas spring brackets and fasten with one M8 self-locking nut and washer.

4. ROOF

4.1 Place the roof onto the UTV roll cage

4.2 Fasten the roof to the UTV roll cage with M8x30 screws, washers, nuts, and brackets towards the back of the roof and M8x35 screws, washers, nuts, and brackets towards the front of the roof. If necessary, remove upper ledge upper bracket screw and lead it thru the roof too on both sides.



Fig. 3.9

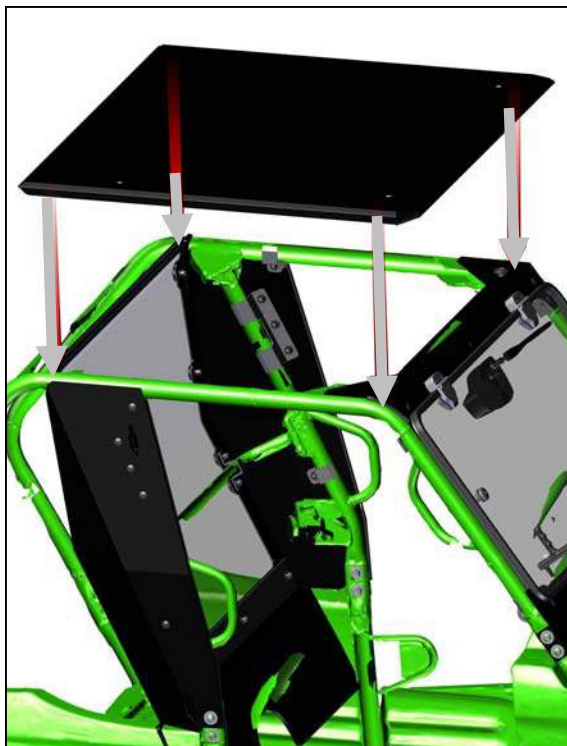


Fig. 4.1

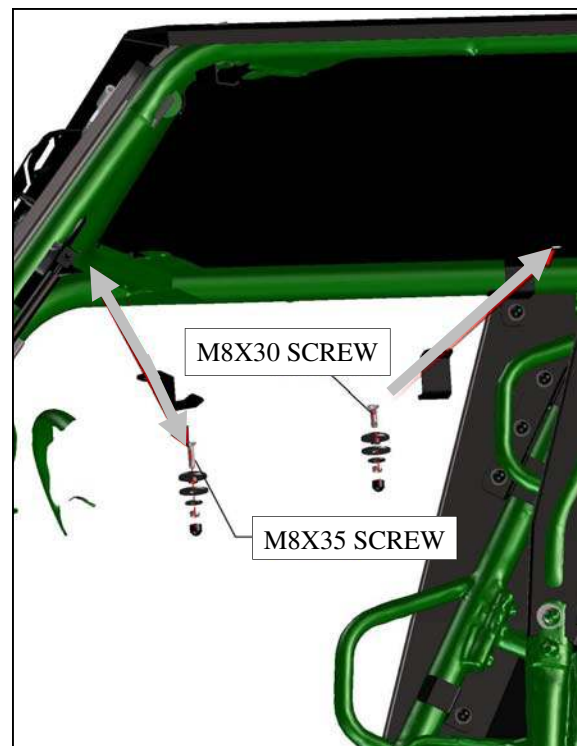


Fig. 4.2

5. FUEL FILLER COVER

5.1 Align the fuel filler cover into position on the right side of the vehicle.

5.2 Transfer the hole locations in the fuel filler cover onto the UTV plastic cover and drill 4 holes (5/16" diameter) (shown in the white circles in the photo)

5.3 Fasten the fuel filler cover with the supplied plastic rivets

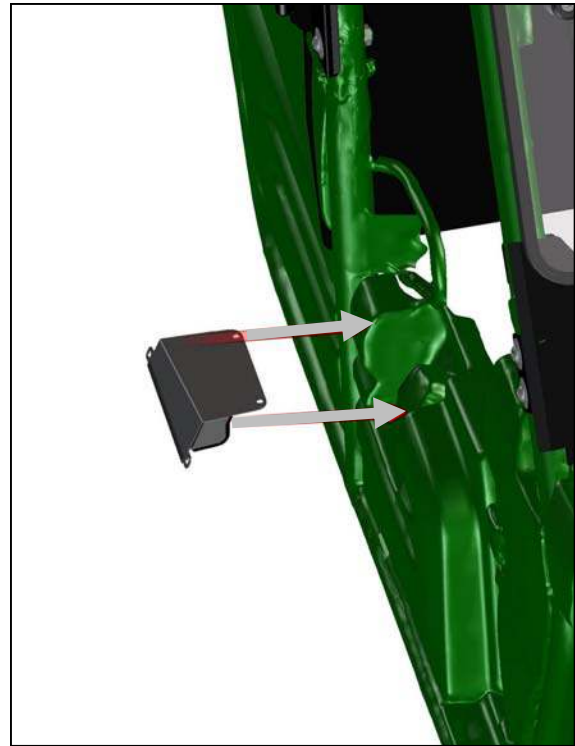


Fig. 5.1

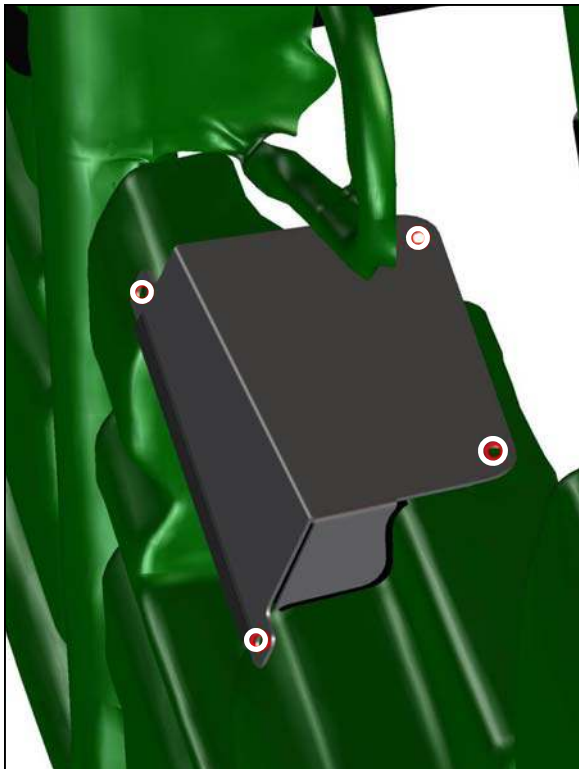


Fig. 5.2

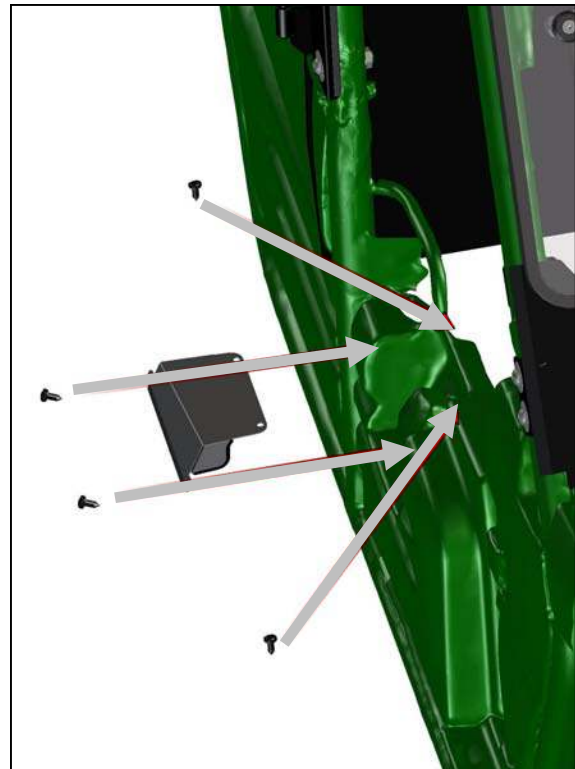


Fig. 5.3

6. DOORS

6.1 Align the front hinge brackets on the front door ledge and fasten with 2x M6x20 screws, washers, and nuts.

6.2 Place the right front door ledge onto the front hinge bases with 2x M6x20 screws, washers, and nuts.

6.3 Carefully drill 2 holes (5/16" diameter) into the UTV plastic cover so that they line up with the front door ledge holes. Fasten the right door ledge to the UTV covers with the included plastic rivets

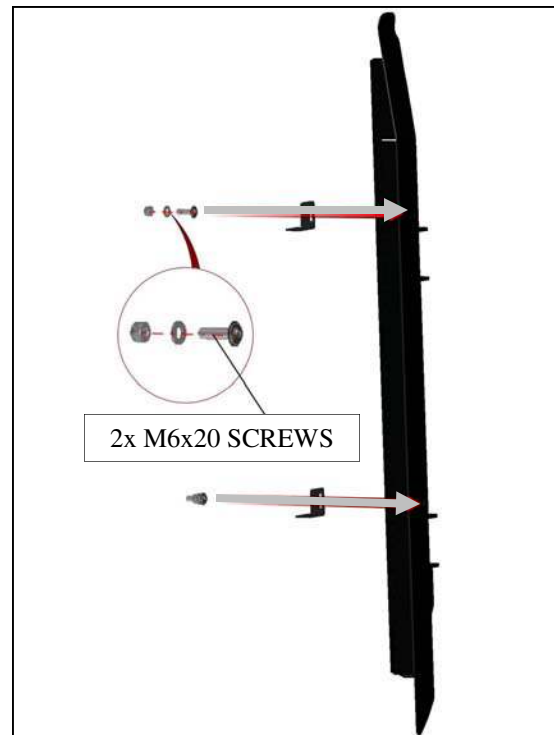


Fig. 6.1

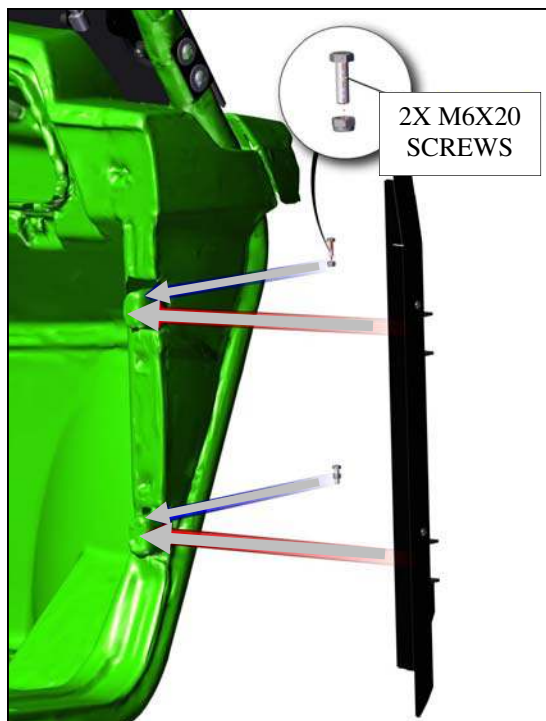


Fig. 6.2



Fig. 6.3

6. DOORS (cont'd.)

6.4 Install the latch pin, finger guard, washer, and nut to the right door stop. Install the right door stop assembly into the right door stop bracket. Fasten with 3x M8x20 screws, washers, and nuts.

6.5 Place the right door stop bracket assembly onto the right front bottom ledge bracket with one M8x20 screw, washer, and nut, and 3x M8 self-locking nuts and washers.

6.6 Install one 10mm washer onto each hinge pin and lower the right door onto the hinges

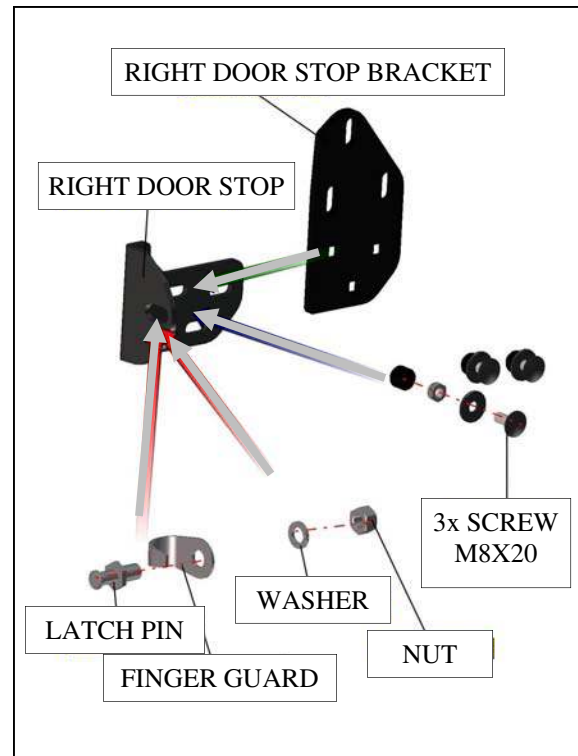


Fig. 6.4



Fig. 6.5



Fig. 6.6

6. DOORS (cont'd.)

6.7 Adjust the right door into position and tighten hinge screws to 7 ft.-lbs. max. using care to not damage the polycarbonate.

6.8 Adjust the right door stop assembly into position and tighten screws firmly

6.9 Install the gas spring into the brackets and fasten with 2x M8 self-locking nuts

6.10 Adjust the door latch assembly and/or the door latch bracket assembly to the best position and tight nuts firmly. Note: the door latch is a rotary type with two positions to close. Adjust door so that when fully closed door latch clicks **twice** for total engagement. If more adjustment is necessary, repeat previous



Fig. 6.7



Fig. 6.8



Fig. 6.9

7. OPTIONAL WIPER

7.1 If a separate wiper was purchased, follow the instructions included with that kit. **CAUTION:** the inside surface of the windshield is coated with a plasticized safety film. Use care to avoid scratching the inside surface.

8. FINISHING TOUCHES

8.1 Fig. 8.1 shows the placement of a decal (supplied) on the passenger's side (Warning: Pinch Point). At the installer's discretion, apply one here and one on the driver's side.



Fig. 8.1

8.2 Per the side-by-side photos below, apply one decal (Warning: Pinch Point) where considered appropriate to indicate that when the steering wheel is tilted all the way up there is a pinch point to be aware of. Note: the left photo shows the steering wheel tilted all the way down and the right photo shows the steering wheel tilted all the way up.

Caution: use care when tightening any flat head screw in countersunk holes in plastic components to avoid cracking. **Torque to 7 ft.-lbs. max.**

IMPORTANT: ROPS hardware must be torqued to the appropriate values on the BOLT TORQUE chart at the end of this manual.

Tighten all hardware at this time

Silicone sealant can be used to close up any small surface transition areas/openings around the entire cab.

If the doors do not seal properly, it is acceptable to use care and bend the door frames to fit better.



SERVICE PARTS



Left Door Assembly
p/n: 8SV-4810-07L



Right Door Assembly
p/n: 8SV-4810-07R



Rear Panel Assembly
p/n: 8SV-4810-06



Front Panel Assembly
p/n: 8SV-4810-02

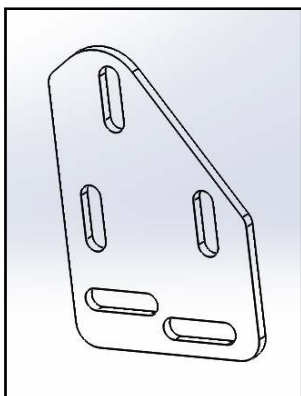


Roof Assembly
p/n: 8SV-4810-01

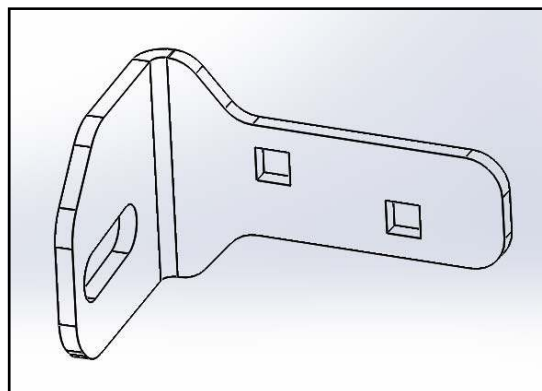
ADDITIONAL SERVICE PARTS

Kawasaki Teryx LE ClearView Cab p/n: 1KAWT8002CV

PART NUMBER:	DESCRIPTION:
9SV-DSTRH	DOOR STRIKER KIT (SET OF 5)
9SV-00004	INSIDE DOOR LATCH, LEFT (QTY.: ONE)
9SV-00005	INSIDE DOOR LATCH, RIGHT (QTY.: ONE)
9SV-00006	INNER DOOR HANDLE (QTY.: ONE) (SAME ON BOTH DOORS)
9SV-00007	OUTER DOOR LATCH (QTY.: ONE)
9SV-00025	FRONT HINGE (QTY.: 2)
9SV-00027	FRONT GLASS LOCK (METAL) (QTY.: 2)
9SV-00038	GAS SPRING HOLDER (QTY.: ONE)
9SV-00048	GAS SPRING (QTY.: 2) (FOR DOORS)
9SV-00091	GAS SPRING (QTY.: 2) (FOR WINDSHIELD)
9SV-00092	DOOR HINGE SLEEVE, RIGHT, UPPER (QTY.: ONE)
9SV-00093	DOOR HINGE SLEEVE, RIGHT, BOTTOM (QTY.: ONE)
9SV-00094	DOOR HINGE SLEEVE, LEFT, UPPER (QTY.: ONE)
9SV-00095	DOOR HINGE SLEEVE, LEFT, BOTTOM (QTY.: ONE)
9SV-00098	HARD PLASTIC WASHER WITH COUNTERSINK (QTY.: ONE)
9SV-00099	GAS TANK COVER ASSEMBLY (QTY.: ONE)



Mounting Plate, Striker
p/n: 8SV-SM-00621
(qty.: one)



Striker Mount, Right (shown)
p/n: 8SV-SM-00622-R (qty.: one)

Striker Mount, Left (not shown)
p/n: 8SV-SM-00622-L (qty.: one)








BOLT TORQUE

BOLT TORQUE SPECIFICATIONS

GENERAL TORQUE SPECIFICATION TABLE

Use the following torques when special torques are not given. These values apply to fasteners as received from suppliers, dry, or when lubricated with normal engine oil. They do not apply if special graphited or moly disulphide greases or other extreme pressure lubricants are used. This applies to both UNF and UNC threads. Remember to always use grade five or better when replacing bolts.

IMPORTANT: On all PLATED GRADE 8 bolts, reduce torque 15% from listed bolt torque specification.

SAE Grade No.		2				5				8*			
Bolt head identification mark as per grade. NOTE: Manufacturing Marks Will Vary						  				  			
Bolt Size		TORQUE				TORQUE				TORQUE			
		Pounds Feet		Newton-Meters		Pounds Feet		Newton-Meters		Pounds Feet		Newton-Meters	
Inches	Millimeters	Min.	Max.	Min.	Max.	Min.	Max.	Min.	Max.	Min.	Max.	Min.	Max.
1/4	6.35	5	6	7	8	9	11	12	15	12	15	16	20
5/16	7.94	10	12	14	16	17	20.5	23	28	24	29	33	39
3/8	9.53	20	23	27	31	35	42	48	57	45	54	61	73
7/16	11.11	30	35	41	47	54	64	73	87	70	84	95	114
1/2	12.70	45	52	61	70	80	96	109	130	110	132	149	179
9/16	14.29	65	75	88	102	110	132	149	179	160	192	217	260
5/8	15.88	95	105	129	142	150	180	203	244	220	264	298	358
3/4	19.05	150	185	203	251	270	324	366	439	380	456	515	618
7/8	22.23	160	200	217	271	400	480	542	651	600	720	814	976
1	25.40	250	300	339	406	580	696	787	944	900	1080	1220	1464
1-1/8	25.58	-	-	-	-	800	880	1085	1193	1280	1440	1736	1953
1-1/4	31.75	-	-	-	-	1120	1240	1519	1681	1820	2000	2468	2712
1-3/8	34.93	-	-	-	-	1460	1680	1980	2278	2380	2720	3227	3688
1-1/2	38.10	-	-	-	-	1940	2200	2631	2983	3160	3560	4285	4827

*Thick Nuts must be used with Grade 8 bolts

METRIC BOLT TORQUE SPECIFICATIONS

		5.6			8.8			10.9		
Size of Screw	Property Class	Course Thread			Fine Thread					
		Pitch (mm)	Pounds Feet	Newton-Meters	Pitch (mm)	Pounds Feet	Newton-Meters			
M6	5.6	1.0	3.6-5.8	4.9-7.9	-	-	-			
	8.8		5.8-9.4	7.9-12.7		-	-			
	10.9		7.2-10	9.8-13.6		-	-			
M8	5.6	1.25	7.2-14	9.8-19	1.0	12-17	16.3-23			
	8.8		17-22	23-29.8		19-27	25.7-36.6			
	10.9		20-26	27.1-35.2		22-31	29.8-42			
M10	5.6	1.5	20-25	27.1-33.9	1.25	20-29	27.1-39.3			
	8.8		34-40	46.1-54.2		35-47	47.4-63.7			
	10.9		38-46	51.5-62.3		40-52	54.2-70.5			
M12	5.6	1.75	28-34	37.9-46.1	1.25	31-41	42-55.6			
	8.8		51-59	69.1-79.9		55-68	75.9-92.1			
	10.9		57-66	77.2-89.4		62-75	84-101.6			
M14	5.6	2.0	49-56	66.4-75.9	1.5	52-64	70.5-86.7			
	8.8		81-93	109.8-126		90-106	122-143.6			
	10.9		96-109	130.1-147.7		107-124	145-168			
M16	5.6	2.0	67-77	90.8-104.3	1.5	69-83	93.6-112.5			
	8.8		116-130	157.2-176.2		120-138	162.6-187			
	10.9		129-145	174.8-196.5		140-158	189.7-214.1			
M18	5.6	2.0	88-100	119.2-136	1.5	100-117	136-158.5			
	8.8		150-168	203.3-227.6		177-199	239.8-269.6			
	10.9		175-194	237.1-262.9		202-231	273.7-313			
M20	5.6	2.5	108-130	146.3-176.2	1.5	132-150	178.9-203.3			
	8.8		186-205	252-277.8		206-242	279.1-327.9			
	10.9		213-249	288.6-337.4		246-289	333.3-391.6			