



# INSTALLATION MANUAL SWITCH PANEL / FUSE BLOCK (77700-VC5080, VC5080) KUBOTA RTV-X900, RTV-X1120D, RTV-X1140, RTV-XG850

## CALIFORNIA PROPOSITION 65



**WARNING:**  
Cancer and reproductive harm - [www.P65Warnings.ca.gov](http://www.P65Warnings.ca.gov)

This kit fits up to 6 Curtis Electrical Accessories.

Requires: VC5020, VC5023, or VC5025 Windshield.

Required for: VC5083A Heater Kit, VC5030 Wiper Kit, VC5056 LED Strobe Light Kit, VC5057A 4-Way Flashers, VC5050 Front LED Work Lights, and VC5051A Rear LED Work Lights.

Not compatible with: V5027, V5028, V5258, or V5259 Windshields.

## BEFORE INSTALLING SWITCH PANEL / FUSE BLOCK

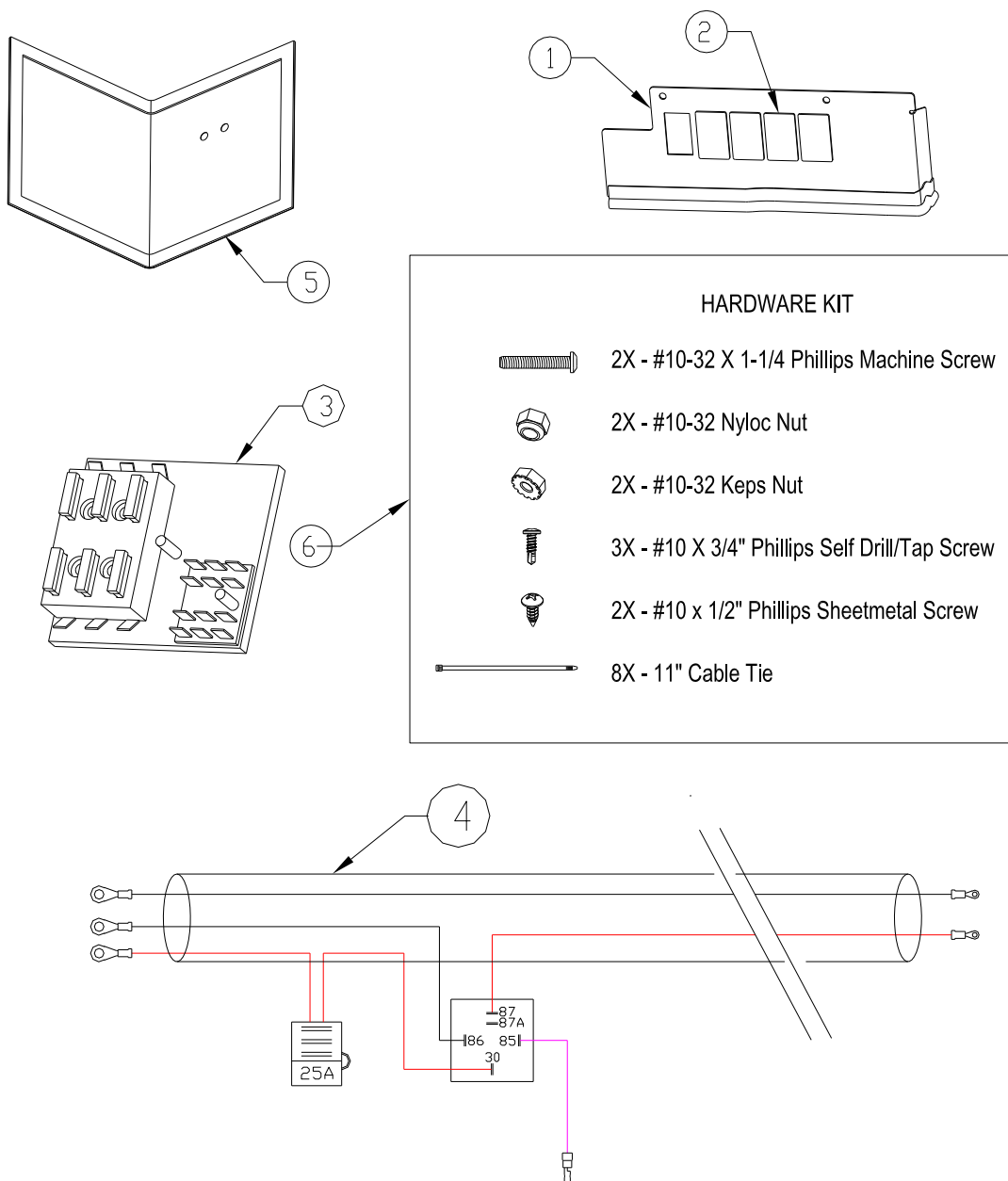
- Read all instructions and safety instructions in this manual.
- Refer to your machine's operator's manual and safety instructions on your machine's safety decals.
- Wear appropriate personal protective equipment (PPE) when performing work.
- Disconnect negative (-) terminal on battery before performing work.
- Hang a **"DO NOT OPERATE"** tag in operator station.

**Estimated assembly time: 45 minutes**

## ■ AVAILABLE REPLACEMENT PARTS

Ref. No.	Part No.	Part Name	QTY	REMARKS
1	77700-05257	Switch Panel	1	Code No.: KX9-10 (contains one switch panel)
2	77700-05153	Hole Plug for Carling Switch	1	Code No.: 9VH2-01 (contains one hole plug)
3	77700-05258	Fuse Block, 6-Position	1	Code No.: FP-01 (contains one fuse block)
4	77700-05259	Fuse Panel Wire Harness	1	Code No.: KX9-SPWH (contains one wire harness)
5	77700-05260	Vinyl Fuse Block Cover	1	Code No.: KF9-FBC (contains one fuse block cover)
6	77700-05261	Switch Panel Hardware Kit	1	Code No.: KX9HWK-WHM (contains all items listed below)
-	77700-05262	Installation Instructions	1	Code No.: VC5080P1 (contains one manual)
-	70000-01214	Relay	1	Code No.: V4238P10 (contains one relay)

NOTE: Items in hardware kit not sold separately.





## CAUTION

To avoid personal injury:

- Park the machine on a firm and level surface.
- Apply the parking brake if applicable.
- Stop the engine and remove the key from the machine if applicable.
- Disconnect negative (-) terminal on battery before performing work.

## ■ ASSEMBLY PROCEDURE

### NOTE:

- **All assembly procedures listed within this manual are generally representative of the machine model for which the manual is written.** Your machine may be configured differently, but the outline for the procedure should still be followed. For further support for any issues not covered within the pages of this manual, please contact your local Kubota representative.

1. Open the hood and position the vinyl cover and fuse block as shown in figure 1. The fold in the vinyl should be towards the front of the vehicle and centered on the plastic wheel well. The holes in the vinyl should line up with the holes in the fuse block.
2. Using the fuse block as a guide, drill the first hole through the front hole in the fuse block and down through the wheel well. Use a 3/16" drill bit.
3. Bolt the fuse block to the wheel well with the black vinyl cover in place underneath it using a #10-32 x 1-1/4" machine screw and #10-32 locknut with the nut inside the wheel well.
4. Once fastened to the wheel well, drill the second hole through the rear hole in the fuse block and secure with another #10-32 x 1-1/4" screw and locknut.

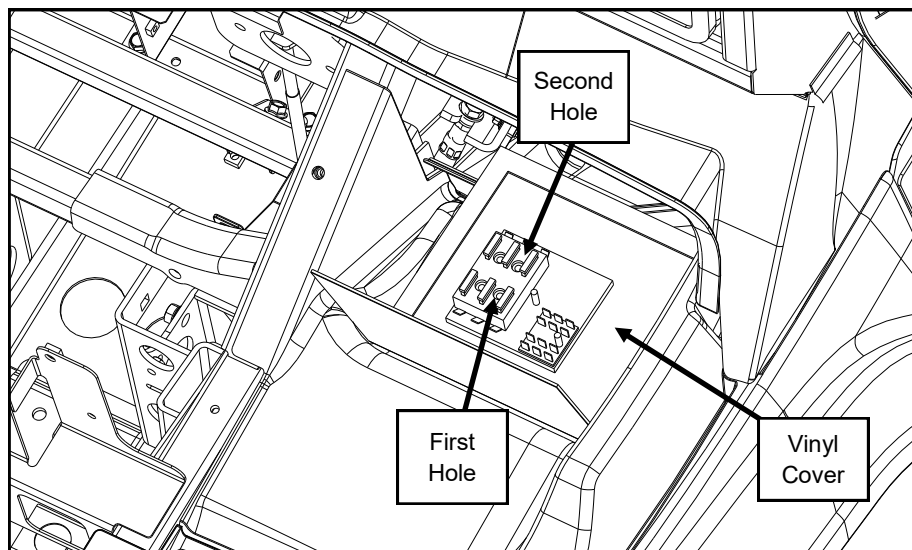


Fig. 1

5. Per figure 5 (RTV X900 shown), route the long portion of the harness with the small ring terminals forward from the battery area. The harness should follow the coolant lines forward above the skid pan and lie just inside the main frame rail. Route the wires upward into the hood area along the same route the power steering lines enter into the hood area. Once the wires are in the hood area, route over to the fuse block making sure that they cannot interfere with the emergency brake operation.

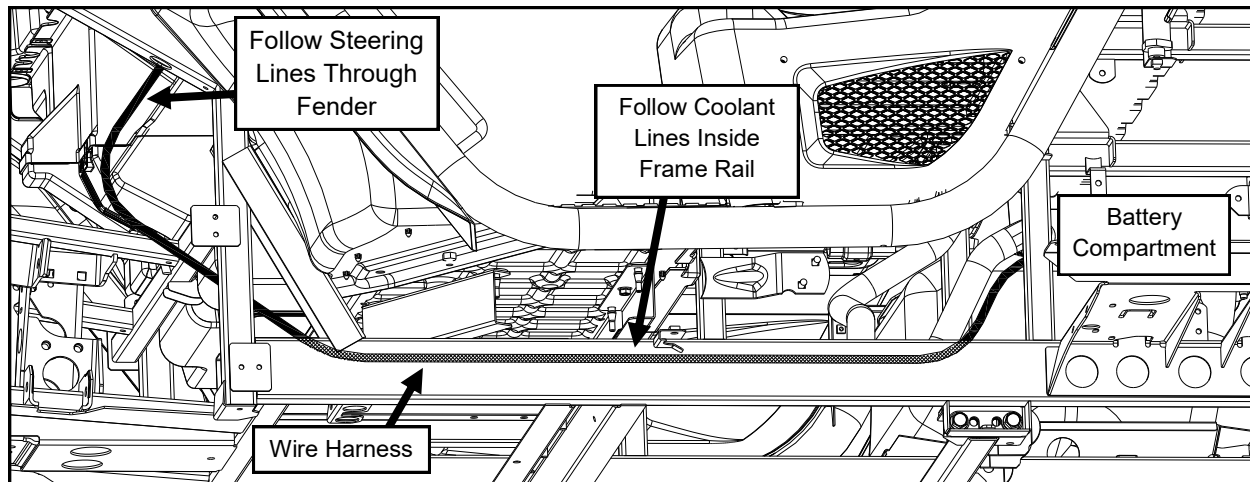


Fig. 5

6. Use figure 6 as a guide for wiring connections. Connect as follows:

- A. Per figure 6a, connect the small ring terminals to the fuse block with #10-32 Keps nuts from hardware kit.
- B. Connect the large ring terminal on the red wire to the positive terminal on the battery.
- C. Connect the large ring terminals on the two black wires to the negative terminal on the battery.
- D. Connect the male bullet on the purple wire coming from the relay to the female key-controlled bullet on the vehicle harness. This is found under the blue tape on the main vehicle harness located above the battery.

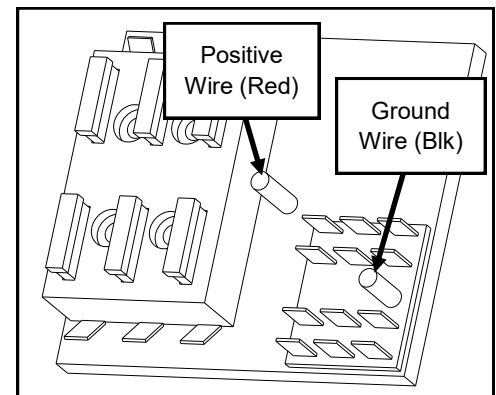


Fig. 6a

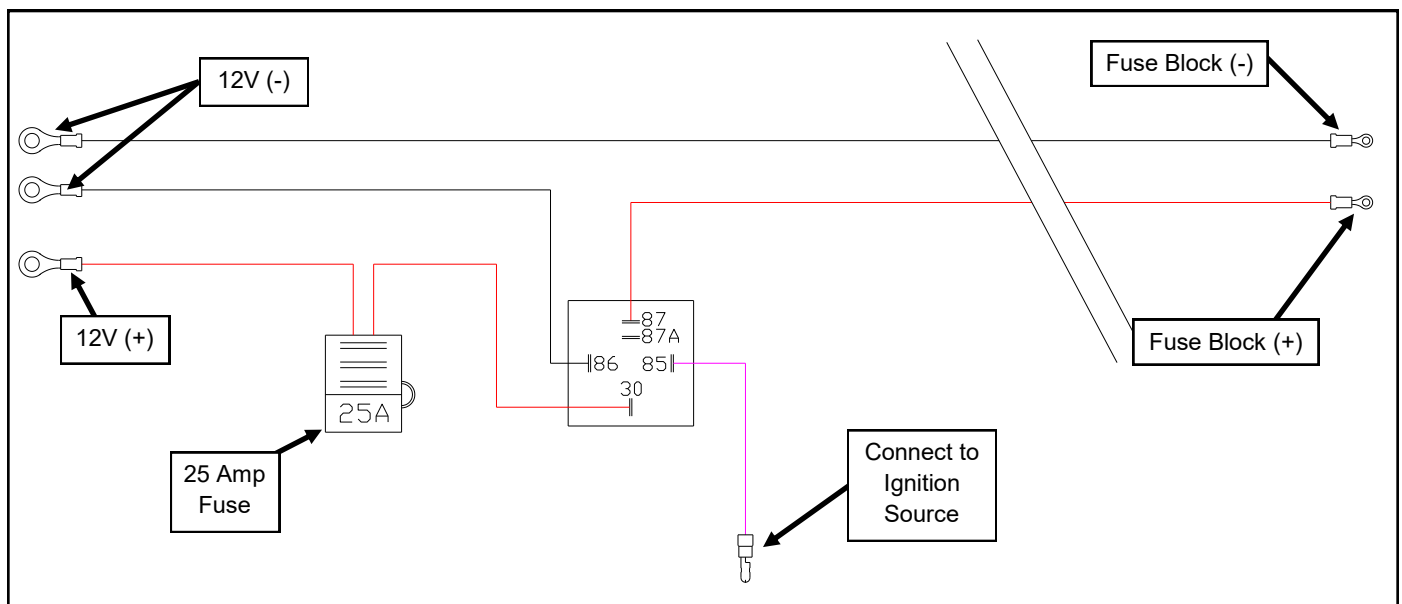


Fig. 6

7. Insert the switch for each accessory into the switch panel and attach the accessory wire harness to the back of it. Route all harnesses around the back of the ROPS tube. Push the short wires (red + black) down through the opening in the dash (see figure 7) and route to the fuse block area. Also push the heater harness wires down through the opening in the dash if installed.
8. Once all wires are properly routed, attach the switch panel to the windshield frame using (2) #10 x 1/2" sheetmetal screws as shown in figure 8.
9. Connect the long end of each wire harness to its respective accessory and fasten with zip ties according to the accessory instructions.
10. Attach the short wires on each wire harness (red + black) to the fuse block. The red wire should be attached to a tab next to one of the empty fuse holders and the black wire should be attached to a tab on the ground block.
11. Install the fuse supplied with the accessory into the holder and check the operation of the switch.
12. Once all accessories are fully wired, collect all short wires routed to the fuse block and zip tie them together under the hood.
13. Fold the black vinyl cover backwards and seal the Velcro edges together.
14. Secure the main fuse block harness to the vehicle with the supplied zip ties along its length making sure to avoid any hot or moving parts.
15. Fasten the fuse holders and relay to the vehicle using the supplied self drill/tap screws.

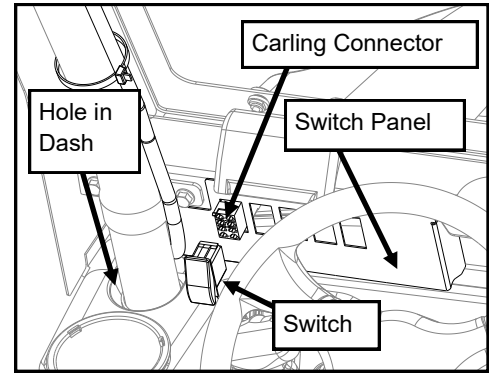


Fig. 7

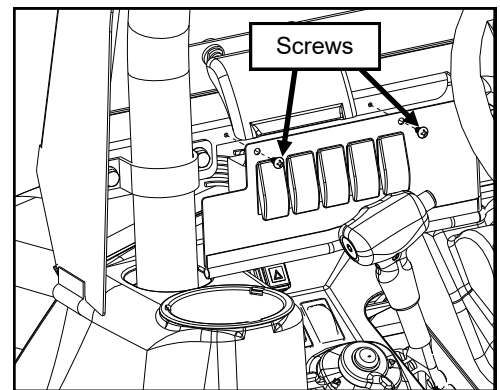


Fig. 8