



**POLARIS®**

# INSTALLATION INSTRUCTIONS

**Polaris Modular Roof Kit (p/n: 2874887 = white; p/n: 2874887-067 = black)**

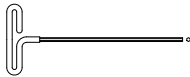
**IMPORTANT: THIS ACCESSORY WEIGHS 54 POUNDS. PLEASE ADJUST THE VEHICLE PAYLOAD ACCORDINGLY.**

**The contents of this envelope are the property of the owner. Be sure to leave with the owner when installation is complete.**

**⚠ WARNING** Exposure to Carbon Monoxide can Cause illness, serious injury or death. Never operate vehicle if suspicious of Carbon Monoxide. Inspect exhaust system for leaks monthly. Leaks can result from loose connections, corrosion, cracks or other damage to the exhaust manifold. If leaks are found, repair or replace exhaust system. Do not use vehicle until repair or replacement is complete.

**ADDED WEIGHT NOTICE**  
Curtis Cabs, blades and general accessories add additional weight to the base vehicle. All Curtis accessory weights are listed in product brochures. Deduct the accessories total weight from the vehicles rated capacity and never exceed the vehicles rated capacity including driver and passenger.

## TOOLS REQUIRED:



3/16" ALLEN WRENCH



PHILIPS HEAD SCREWDRIVER



3/8" RATCHET



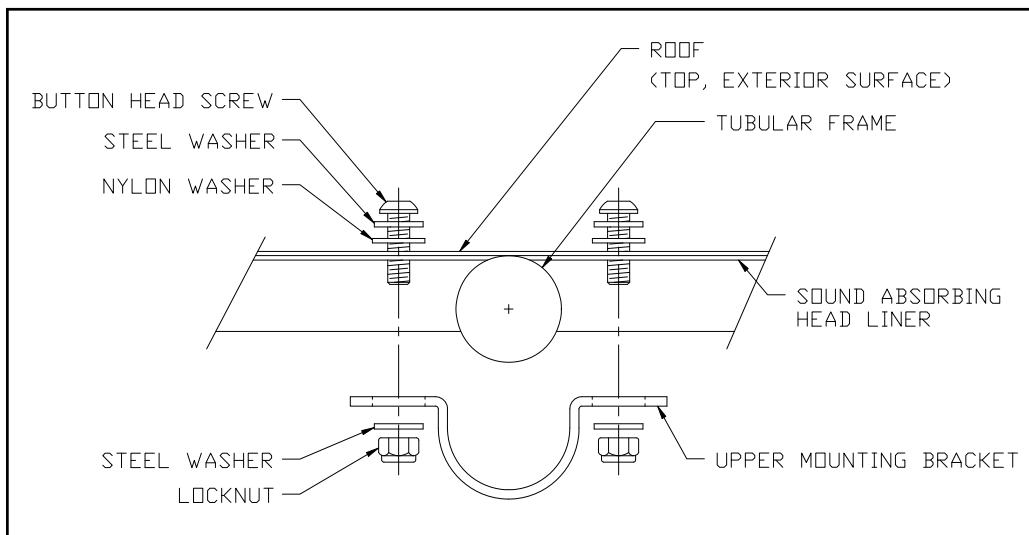
1/2" SOCKET W/ 3/8" DRIVE

## 1. INSTALL ROOF

- 1.1 With assistance, place the roof on top of the tubular frame with angled visor towards front.
- 1.2 Use the four (4) supplied upper mounting brackets to attach the roof to the tubular frame. (NOTE: holes in mounting bracket will correspond with corner roof holes.) Use a Philips head screwdriver to puncture bolt starting holes up through the roof headliner. Per the sketch below, use 5/16" x 1-1/4" long button head screws, steel washers, nylon washers, and locknuts. (NOTE: nylon washers are used on the exterior surface of the roof to help prevent water leaks.)

## 2. FINISHING TOUCHES

- 2.1 If not installing hard side doors install the remaining 2 bolts in the holes near the angles on the side of the roof to plug the holes.
- 2.2 Install 5/16" plastic nut covers on all eight (8) locknuts



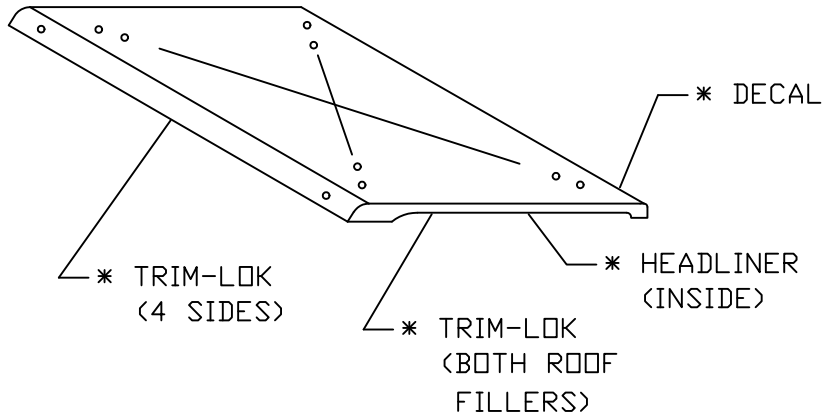
## CARE AND MAINTENANCE

Check and tighten hardware after 40 hours of operation.  
 Periodically inspect and tighten hardware for the remainder of the unit's life.  
 Wash the painted surfaces of the unit with commercial automotive cleaning products.

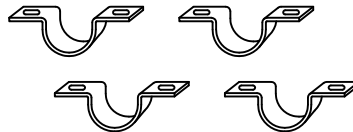
**POLARIS MODULAR CAB PARTS LIST**

**ROOF KIT**

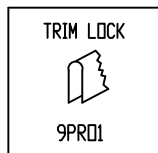
<b>ROOF</b>	<b>QTY.</b>	<b>P/N</b>
	1	2874887 (WHITE) (2874887-067 = FLAT BLACK ROOF)



<b>UPPER MOUNTS</b>	<b>QTY.</b>	<b>P/N</b>
	4	2874888-2



RUBBER TYPES:



**POLARIS MODULAR CAB PARTS LIST**

**ROOF KIT**

**ADDITIONAL SERVICE PARTS**

<u>QTY.</u>	<u>P/N</u>	<u>DESCRIPTION</u>
1	2874887	ROOF (WHITE); (2874887-067 = FLAT BLACK ROOF)
4	2874888-2	UPPER MOUNTS
1	287488-HWK	HARDWARE BAG

HARDWARE BAG CONTAINS:

- (06) 5/16-18 x 1" LONG BUTTON HEAD SCREWS
- (08) 5/16-18 x 1 1/4" LONG BUTTON HEAD SCREWS
- (10) 3/8" NYLON WASHERS
- (20) 5/16" FLAT STEEL WASHERS
- (10) 5/16-18 LOCKNUTS
- (10) 5/16" PLASTIC NUT COVERS